

Journal of

# Clinical and Analytical Medicine

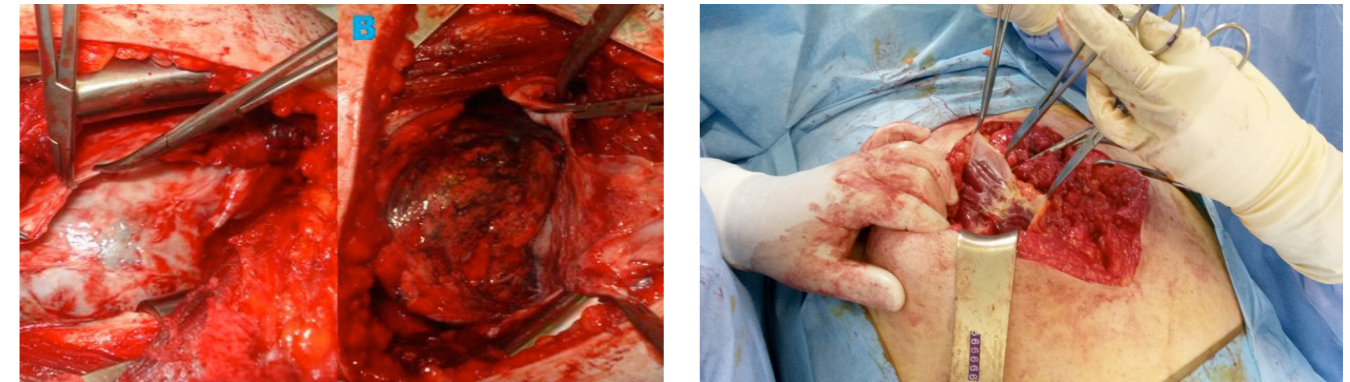
Klinik ve Analitik Tıp Dergisi

Vol: 4 Supplement 5 October 2013

Vol: 4 Supplement 5 October 2013

## Bilateral Anterior Rectus Sheath Turnover Flap for Abdominal Closure

Kaya B



### Contents;

- A Case of Takayasu's Arteritis Presenting with Acute Stroke
- Semiinvasive Aspergillosis Case Coexisting to Metastatic Renal Cell Cancer
- Primary Tuberculosis Osteomyelitis of Rib
- Tandoor Heat Related Symmetric Squamous Cell Carcinoma: Case Report
- Mucopolysaccharidosis VI (Case Report) Brain MRI and MR Spectroscopy Findings
- Giant Mediastinal Cystic Teratoma Involving Pancreatic Tissue and Showing Rapid Development
- Optic Neuropathy Secondary to an Onodi Cell Mucocele in a Child
- A Case of Severe Mercury Intoxication with Unknown Source
- Association of Hepatic Hydatid Cyst Disease and Liver Tuberculosis
- Multicystic Nephroma in Elderly: A Case Report
- A Case of Hidroacanthoma Simplex Mimicking Bowen's Disease
- Ascending to Descending Aortic Bypass: Repair Via Median Sternotomy on the Beating Heart
- Anatomic Repair of Right Aortic Arch, Kommerell's Diverticula and Aberrant Left Subclavian Artery Complex

Journal of Clinical and Analytical Medicine / Klinik ve Analitik Tıp Dergisi

