

Journal of

Clinical and Analytical Medicine

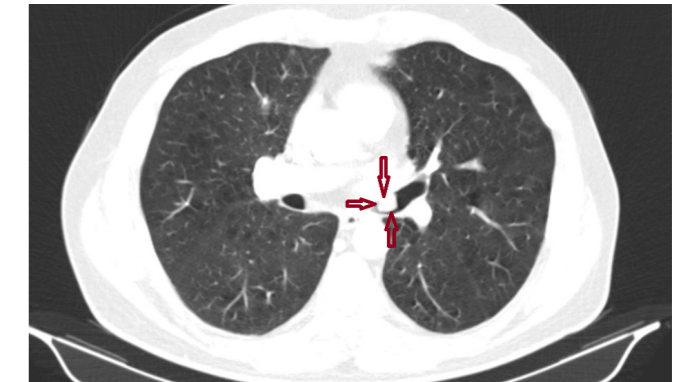
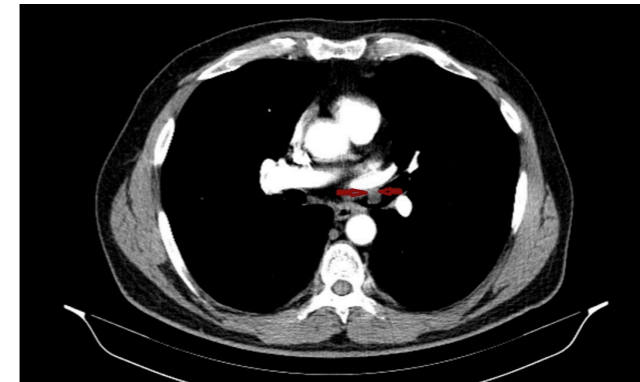
Klinik ve Analitik Tıp Dergisi

Vol: 6 Supplement 1 February 2015

Vol: 6 Supplement 1 February 2015

Pulmoner Hamartomlarda Cerrahi Tedavi

İncekara F, Aydoğdu K, Sayılır E, Gülhan E,
Demirağ F, Fındık G, Kaya S



Contents;

- *Tp-Te Interval and Tp-Te/QT Ratio in Polycystic Ovary Syndrome*
- *Importance of Nasal Septal Deviation Type on Planning of Surgery*
- *Research of Acinetobacter Baumannii Isolation From Clinical Samples in Second Step Hospital*
- *Breast Masses in Adolescent MaleAdolesan*
- *Perinatal Outcomes in Women with Preeclampsia: Experience of a Tertiary Referral Center*
- *Attitudes of General Population and Physicians Towards Alcohol Addiction*
- *Large Cell Neuroendocrine Carcinoma of the Lung*
- *Topiramate Induced Excessive Sialorrhea*
- *Isolated Hydatid Cyst of Ankle: A Case Report*
- *Physiological Status in Emergency Room Thoracotomy*
- *Saccular Splenic Artery Aneurysm*
- *Comparison of Limberg Flep Technique and Phenol Treatment Methods*

Journal of Clinical and Analytical Medicine / Klinik ve Analitik Tıp Dergisi

