

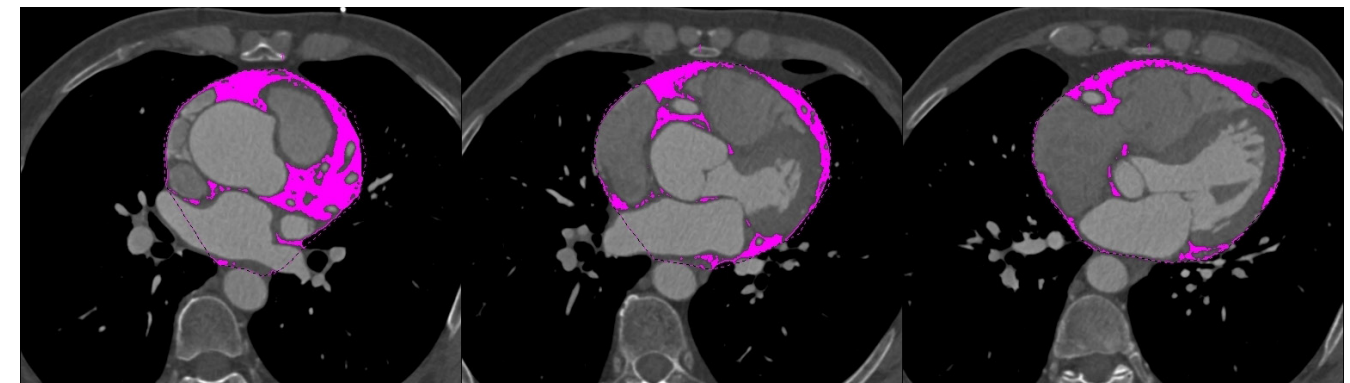
Journal of

Clinical and Analytical Medicine

Vol: 8 No: 2 March 2017

The Relationship Between Epicardial Adipose Tissue Volume and Coronary Plaque Structure in Diabetics

Aksan G, Sığircı S, Çetinkal G, Ayhan BM, Yıldız SS,
Soylu AI, Başak M, Kılıçkesmez KO



Contents;

- *Peripheral Facial Nerve Paralysis Secondary to Acute Otitis Media*
- *The role of Histopathology, Endometrium Thickness and Obstetric History in Abnormal Uterine Bleeding*
- *Evaluation of Erythrocyte and Thrombocyte Parameters in Pediatric Patients with Diabetes Mellitus*
- *Evaluation of Renal Function in Children by Tc-99m DTPA Scintigraphy*
- *The Levels of Serum B12, Folic Acid and Homocysteine in the Thromboembolic Diseases*
- *Neutrophil: Lymphocyte Ratio and Mean Platelet Volume in Patients with Gout*
- *Does Obesity Impact Assisted Reproductive Outcomes in Patients with Endometriosis?*
- *The Comparative Analysis of Biochemical Parameters in Patients with Pleural Effusions: A Prospective Study*
- *The Relationship Between Postpartum Depression and Intimate Partner Violence*
- *Complications of Spinal Cord Injuries: Two Case Reports and a Review of the Literature*
- *Patient Preparation for Oncological FDG-PET/CT Imaging*

